

Xiangshun

翔顺锻造

锻造.五金配件

一站式采购工厂

FORGING HARDWARE ACCESSORIES


ONE-STOP PURCHASING FACTORY



联系方式: 0532-87523278


地址: 青岛市即墨区环秀街道三里庄工业园
青岛翔顺智能工业有限公司

圆头吊钉（脚钉）
Spherical Head Anchor

	额定载荷 (吨) T	货号	常规规格 (mm)									
			直径	长度length								
	1.3T	SHA-013	10	40	55	65	85	120	240			
	2.5T	SHA-025	14	45	55	68	85	120	140	170	240	280
	4.0T	SHA-040	18	65	75	95	120	150	180	210	240	340
	5.0T	SHA-050	20	75	95	120	10	180	210	240	340	480
	7.5T	SHA-075	24	85	95	115	120	165	200	240	300	540
10T	SHA-100	28	85	100	135	170	200	240	300	340	680	

材质：CM490 20Mn2
安全系数：3:1
表面处理：原色、电镀锌、热镀锌

带孔吊钉（单眼吊钉）
Eye Anchor

	额定载荷 (吨) T	货号	尺寸 (mm)		
			直径dia	长度length	
	1.3T	EA-013	10	65	
	2.5T	EA-025	14	90	170
	5.0T	EA-050	20	90	120
	10T	EA-100	28	115	180
20T	EA-200	38	250		


材质：CM490
安全系数：3:1
表面处理：原色、电镀锌、热镀锌

人字板
Erection Anchor

	载荷组 (吨) T	轴向载荷 (吨)T	货号	规格尺寸 (mm)
				长度length
	1.25	1.25	XSEA-125	120
	2.5	1.4	XSEA-140	200
		2.5	XSEA-250	230
	5.0	4.0	XSEA-400	270
5.0		XSEA-500	290	

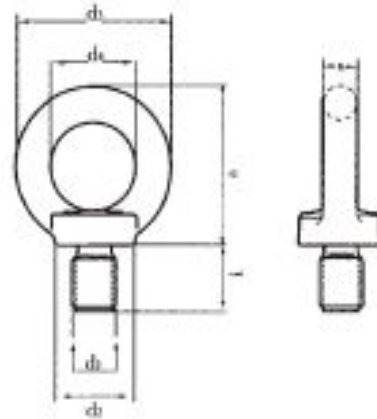
材质：Q345D
安全系数：3:1
表面处理：原色、电镀锌、热镀锌

鸭嘴扣吊具
Lifting Clutch

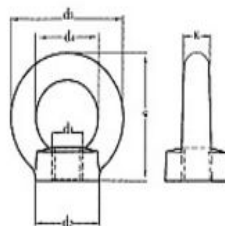
	载荷组 (吨) T	载荷范围 (吨)T	货号
	1.3	1.3	LC-130
	2.5	2.5	LC-250
5	4.0-5.0	LC-500	

材质：合金钢
安全系数：5:1
表面处理：电镀锌、热镀锌

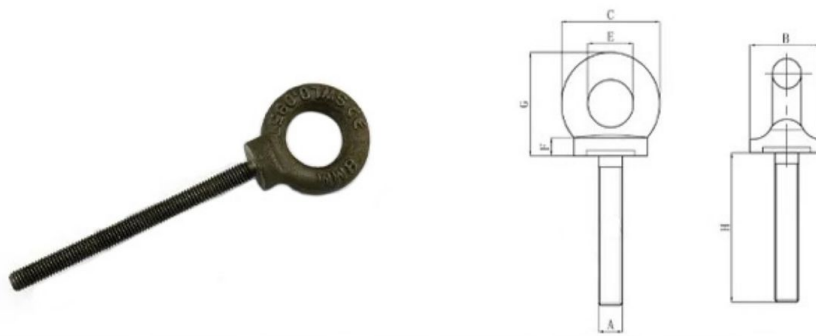
EYE BOLTS DIN580



MEASUREMENTS ACCORDING TO FIGURE(MM)							WLL2*	WLL1*	WEIGHT PER 100(KG.)
D1	D2	D3	D4	H	K	I	T	T	
M6	17	28	16	31	6	13	0.095	0.14	5
M8	20	36	20	36	8	13	0.095	0.14	6
M10	25	45	25	45	10	17	0.17	0.23	11
M12	30	54	30	53	12	20.5	0.24	0.36	18
M14	35	63	35	62	14	27	-	-	28
M16	35	63	35	62	14	27	0.5	0.7	28
M18	40	72	40	71	16	30	-	-	45
M20	40	72	40	71	16	30	0.83	1.2	45
M22	45	81	45	80.5	18	35	-	-	67
M24	50	90	50	90	20	36	1.27	1.8	87
M27	50	90	50	90	20	38	-	-	88
M30	65	108	60	109	24	45	2.6	3.6	166
M33	65	108	60	109	24	45	-	-	166
M36	75	126	70	128	28	54	3.7	5.1	265
M39	85	144	80	147	32	63	-	-	403
M42	85	144	80	147	32	63	5	7	403
M45	100	166	90	168	38	68	-	-	638
M48	100	166	90	168	38	68	6.1	8.6	638
M52	110	184	100	187	42	78	-	-	880
M56	110	184	100	187	42	78	8.3	11.5	880
M64	120	206	110	208	48	90	11	16	1240
M72	150	260	140	260	60	100	15	21	2330
M80	170	296	160	298	68	112	20	28	3420
M100	190	330	180	330	75	130	27	38	4910

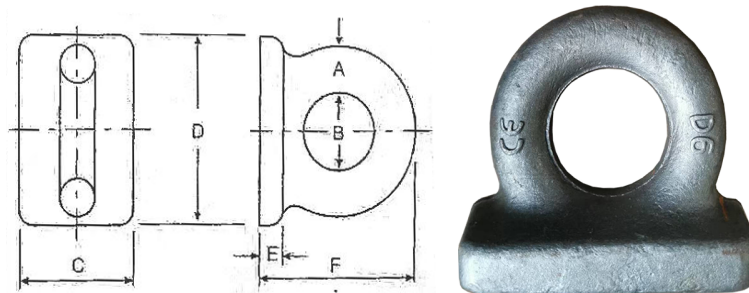


EYE BOLTS BS4278



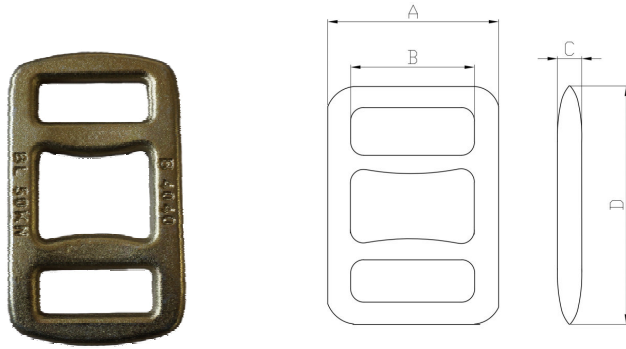
MEASUREMENTS ACCORDING TO FIGURE(MM)						Height	Thread Length	WEIGHT (kg)
Tonnes	a	b	c	d	e	f	g	
0.25	10	22	33	15	7	36	178	0.18
0.40	12	28	41	19	11	45	178	0.25
0.50	14	36	52	24	14	58	178	0.40
0.80	16	36	52	24	14	58	178	0.44
1.00	18	43	62	29	17	69	178	0.70
1.60	20	43	62	29	17	69	178	0.70
1.60	22	50	73	33	17	74	178	1.05
2.50	24	57	82	38	19	87	178	1.50
4.00	30	71	104	48	24	116	178	2.80

EYE PLATE



Diameter a inch	Load rate (ton)	Dimensions(mm)						Weight (kg)
		A	B	C	D	E	F	
3/8	2	10	20	25	45	6	38	0.140
1/2	3.5	12	25	35	60	8	50	0.290
5/8	5.5	16	32	45	70	10	64	0.500
3/4	7.5	19	38	50	85	12	76	0.770
7/8	9.6	22	42	60	102	13	89	1.330
1	13	25	50	70	115	16	100	1.900
1 1/8	15.75	28	57	76	130	18	114	2.530
1 1/4	20	32	64	85	145	19	128	3.920
1 1/2	29	38	76	100	170	22	152	6.580
2	50	50	100	140	230	30	203	14.980

BUCKLE



Material: Forged steel C45 with hardness between 36 and 38 Rockwell

Finish: Galvanized

Type	BS	For webbing width	Weight kg	Dimension(mm)			
	KGS			A	B	C	D
B3035	3,000	35	0.09	55	35	5	85
B3030	6,000	30	0.21	54	33	9	103
B4040	8,000	40	0.26	65	41	11	106
B4050	10,000	40	0.35	65	40	12.5	105
B5050	10,000	50	0.37	71	50	12.5	110

蝴蝶板

Butterfly Plate

	货号	Anchor (T)	length	width	Size
	BP-060	6	178mm	100mm	7"* 4"
	BP-090	9	146mm	106mm	5-3/4"* 4-3/16"
	BP-120	12	178mm	120mm	7"* 4-13/16"
	BP-120	12	203mm	125mm	8"* 4-13/16"

材质: 40Cr热处理

安全系数: 3:1

表面处理: 原色、热镀锌

下拉锻脚安装锚

Forged Erection Shear Plate Anchor

	货号	Anchor	Lifter	Length	Weight (kg)
	FEA-030	3T	2-3T	205	1
	FEA-060	6T	5-6T	267	2.1
	FEA-120	12T	10-12T	324	3.7

材质: Q345B

安全系数: 3:1

表面处理: 原色、电镀锌