



JUSEN 巨森

www.cnjusen.com

金华市巨森园林机械有限公司

JINHUA JUSEN GARDEN MACHINERY CO., Ltd.

目录
Catalog

公司简介

Company profile

巨森证书

Jusen certificates

7大优势

7 advantages

我们的价值观

Our values

公司组织架构图

Company organization chart

我们的团队

Our teams

公司团建活动

Company team
building activities

我们的产品

Our products

生产车间

Production
workshop

产品测试

Product testing

我们的合作伙伴

Our partners

服务流程

Service process

接单渠道

Channels for orders

联系方式

Contact information

公司简介

Company profile

金华巨森园林机械有限公司成立于2004年9月，位于美丽优秀旅游城市----中国浙江省金华市。

我公司主要产品有优质园林工具，汽油链锯，割灌机，土钻，汽油切断锯，汽油鼓风机，汽油绿篱机.....它们中的大多数都在不同国家流行，具有重量轻，动力强，排量大，耐久性好，燃油消耗低等突出特点。并且拥有强大的研发团队，公司秉承“责任，能力，严格和坚持”的企业精神，并欢迎新老客户前来合作。

JIN HUA JUSEN GARDEN MACHIRY CO.,LTD was founded in Sept 2004,located in the beautiful tourist city ----Jinhua City, Zhejiang Province,China.

Our main products are good quality garden tools,gasoline chain saw,brush cutter,earth auger,gasoline blowers,petrol hedge trimmers,most of them are popular in different countries.They also have the characteristics of light weight, high power, large displacement, durability and low fuel consumption.

And has a strong R & D team, the company adheres to the entrepreneurial spirit of responsibility, ability, strictness and persistence, we warmly welcome clients old or new to cooperate with us.



巨森证书 Jusen certificates

Alibaba.com Assessed Supplier



Certificate Number: 47467728_P+T

Presented to

Jinhua Jusen Garden Machinery Co., Ltd.

金华市巨森园林机械有限公司

For details, please refer to <http://zjnewglory.en.alibaba.com>

Assessed by Mr. Boyan Zhang on 13 Apr 2018. Valid from: 14 Apr 2018, Valid until: 13 Apr 2019

Signature:

Alibaba.com

Supplier Assessment Supplier Assessment Certificate

Certificate No. 17407728_P+T

Jinhua Jusen Garden Machinery Co., Ltd.
金华市巨森园林机械有限公司
<http://zjnewglory.en.alibaba.com>

Detailed assessment of the following areas was conducted by Boyan Zhang:

- | | |
|---------------------------------------------------------------------------|-------------------------------------------------------------------|
| <input checked="" type="checkbox"/> Company Overview | <input checked="" type="checkbox"/> Export Revenue |
| <input checked="" type="checkbox"/> Export Export Structure | <input checked="" type="checkbox"/> Export Business Capacity |
| <input checked="" type="checkbox"/> Production Capacity | <input checked="" type="checkbox"/> Quality System |
| <input checked="" type="checkbox"/> Production Process Management | <input checked="" type="checkbox"/> R & D Capacity |
| <input checked="" type="checkbox"/> Company Development / Expansion Plans | <input checked="" type="checkbox"/> Production Flow |
| <input checked="" type="checkbox"/> Compliance & Policy | <input checked="" type="checkbox"/> Cooperate and Product Samples |

Valid: 14 Apr 2018 to 13 Apr 2019

Issued by: Alibaba.com

Assessed by: Certificate No. 17407728_P+T

Assessed Date: 14 Apr 2018

Signature:

Attestation of Conformity

No. MSA 13 01 83489 001

Holder of Certificate: JINHUA JUSEN GARDEN MACHINERY CO., LTD.
Linhua Road, Jinhua, Zhejiang Province, China

Product: Brush cutter
Grass trimmer and brush cutter
Model(s): BC380, BC280, BC280L, BC2380L, J5200, J5030S, J5030, J5201, J5202, J5205, J5205, J5206, J5114, J5112, J5302, J5303
Directives: 2006/42/EC Machinery
2004/108/EC Electromagnetic Compatibility
Standards: EN ISO 12100:2010, EN ISO 12101:2007, BS EN 13008:2007

Parameters: Engine displacement: J5030/J5200: BC380, BC280, BC280L, BC2380L, J5200, J5030S, J5030, J5201, J5202, J5205, J5205, J5206, J5114, J5112, J5302, J5303
Stroke/revolution/min: STAIN/REV/MIN: J5030/J5200: BC380, BC280, BC280L, BC2380L, J5200, J5030S, J5030, J5201, J5202, J5205, J5205, J5206, J5114, J5112, J5302, J5303
Max. engine speed: 1500/min
Noise: 100dB(A)

Tested according to: EN ISO 10891-1:2011
The Attestation of Conformity is issued on a voluntary basis according to Client's Order. It confirms that the test specimen has been tested in accordance with the prescriptive requirements of the directive. It also only in the name of the TUV SUD Product Service Center for testing and certification. For details see website www.tuv-sud.com

Test report no.: TWS/13 03601-00
Valid until: 2018-10-08

Date: 2018-10-08
Page 1 of 1

TUV SUD Product Service Center - Lufthafenstr. 19 - 80399 München - Germany

Verification of Compliance

No. EC 1382 1QD100709 YLG1538

Certificate's Holder: Jinhua Jusen Garden Machinery Co., Ltd.
Linhua Road, Jinhua, Zhejiang Province, China

Product: Earth Auger
Model(s): J5200, J5001, J5201, J5202, J5205, J5205, J5206, J5114, J5112, J5302, J5303
Directives: 2006/42/EC Machinery
2004/108/EC Electromagnetic Compatibility
Standards: EN ISO 12100:2010, EN ISO 12101:2007, BS EN 13008:2007

Notes: This Verification of Compliance has been issued on a voluntary basis. ECM confirms that a Technical Construction File (TCF) is issued for the above mentioned products. The TCF substantially covers the essential requirements of the above-mentioned Directives. This Document is only valid for the equipment and configuration specified and in conjunction with the TCF holder's ability. Changes to the manufacturer's instructions or the configuration of the products are not allowed to produce the CE marking without notifying the manufacturer. The Manufacturer is also responsible for the proper production control to ensure the products are in compliance with the applicable provisions of the given standards/requirements. This certificate can be checked by www.ecmcert.com



Ente Certificazione Macchine Srl
Via Motta, 58 - 41030 Capriate (PV) - Italy
Tel: +39 059 39278 - Fax: +39 059 39279 - Email: certificazioni@entecert.com - www.entecert.com

Certificate of Compliance

No. [redacted]

Certificate's Holder: Jinhua Jusen Garden Machinery Co., Ltd.
No. 1340 Linhua Road, Jinhua Development Area, Jinhua City, Zhejiang Province, China

Product: Ocutline Chain Saw
Model(s): RG3800, RG3800, RG4100, RG4500, RG5000, RG5500, RG5800, JS-C5200, JS-C53800, JS-C54800, JS-C5800, JS-C3800, JS-C3800, JS-C3800, JS-C540

Verification to: Standard: EN ISO 14892:2009
EN ISO 14892 (Electromagnetic Compatibility)

Notes: This product has been verified as CE marking. The product, under the implementation of the Declaration of Conformity to CE, conforms to the EMC (Electromagnetic Compatibility) requirements of the EMC Directive. The product is intended for use in a wide range of applications and is not intended to be used in any of the areas specified in the EMC Directive. The product is intended for use in any of the areas specified in the EMC Directive. The product is intended for use in any of the areas specified in the EMC Directive. The product is intended for use in any of the areas specified in the EMC Directive.

Date of Issue: 03 December 2018
Signature:

Certificate - Сертификат - 證明書 - Certificat - 증명서 - 證明書

Certificate - Сертификат - 證明書 - Certificat - 증명서 - 證明書

Ente Certificazione Macchine

Certificate of Compliance of Certificate

Company Name: Jinhua Jusen Garden Machinery Co., Ltd.
Address: No. 1340 Linhua Road, Jinhua Development Area, Jinhua City, Zhejiang Province, China

Product: Chain Saw
Model(s): RG3800, RG3800, RG4100, RG4500, RG5000, RG5500, RG5800, JS-C5200, JS-C53800, JS-C54800, JS-C5800, JS-C3800, JS-C3800, JS-C3800, JS-C540

Standard: EN ISO 14892:2009
EN ISO 14892 (Electromagnetic Compatibility)

Notes: This product has been verified as CE marking. The product, under the implementation of the Declaration of Conformity to CE, conforms to the EMC (Electromagnetic Compatibility) requirements of the EMC Directive. The product is intended for use in a wide range of applications and is not intended to be used in any of the areas specified in the EMC Directive. The product is intended for use in any of the areas specified in the EMC Directive. The product is intended for use in any of the areas specified in the EMC Directive.

Date of Issue: 03 December 2018
Signature:

Ente Certificazione Macchine Srl
Via Motta, 58 - 41030 Capriate (PV) - Italy
Tel: +39 059 39278 - Fax: +39 059 39279 - Email: certificazioni@entecert.com - www.entecert.com

7大优势

7 advantages

7大优势

1

生产制造能力强。60%的零部件自己生产

Strong manufacturing capacity 60% of the parts are produced by ourselves.

2

备货全
常规零部件库存多，缩短供货周期，以备客户紧急需求。

Variety complete Sufficient inventory of conventional parts and short leadtimes for emergency needs of customers.

3

品种全
本公司研制产品涉及汽锯、油锯、割草机、地钻、电刨、吹风机、... 电产品：电锯、电链锯机、...

Product variety
The company research and development products involve chain saws, lawn mowers, ground drills, hedge trimmers, blowers.

4

研发强
每年不断推出新款，行业领先。我们的团队拥有不断创新的精神，不断研发市场所需的产品。

Strong r & d capability Continuously introduce new models, leading the industry. Our team has the motivation to keep moving forward. Continuously develop products needed by the market.

5

品质强
产品都采用优质原材料，检验，测试从每一个零件到装配，出货前每一台机器都要通过测试，通过强化实验，耐久试验。...

Good quality All products use high quality raw materials. Every spare part has been inspected, tested, and finally installed. Each machine before shipment passed the strong damage test and endurance test.

6

服务好
客户有任何关于质量、技术的问题，1小时内给客户满意的答复。

Good service
The customer has any quality and technical problems and will definitely get a satisfactory response within 1 hour.

7

质量不好，全额退款。

Full refund in case of bad quality.

我们的价值观 Our values

永久客户 Permanent customer

凡是巨森客户,不管是过去还是现在的
将永久享受关怀服务

As long as it is a customer of Jusen, whether it is an old customer or a new customer, enjoy our service forever.

共同成长 Growing together

客户、合作伙伴、员工、对手共同成长
Customers, partners, staff, competitors grow up together.

产品第一 Product first

产品质量是企业生存的源头注重产品不断升级和研发新功能

Product quality is the soul of a company. Focus on product upgrades and develop new features

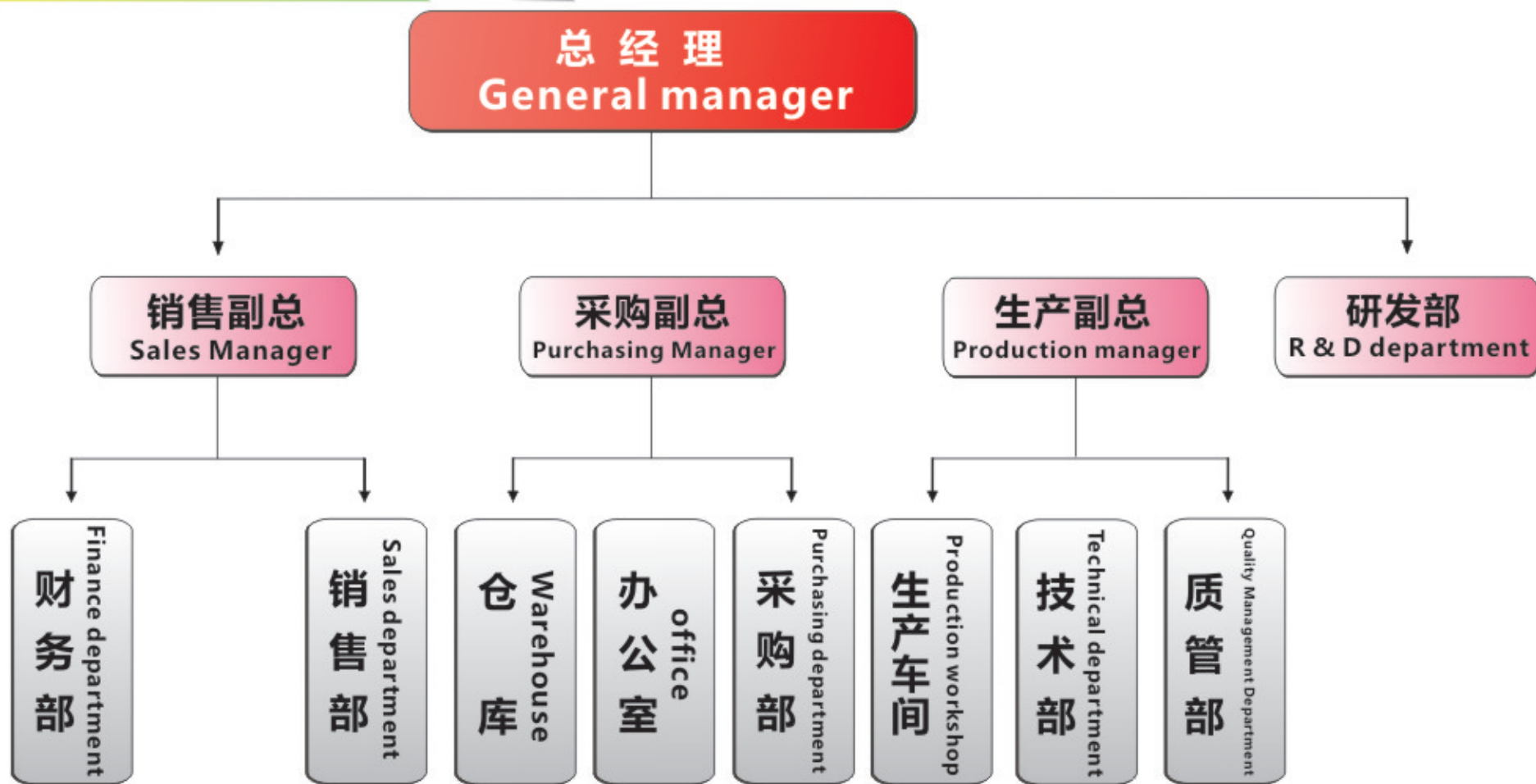
信守承诺 Keep commitments

无论付出多大的代价,我们坚持对客户对员工的所有承诺

No matter what the cost, we will always keep our promise.

公司组织架构图

Company organization chart



创始人

Founder

苏东梅
May Su

座右铭：没有做不到，只有想不到

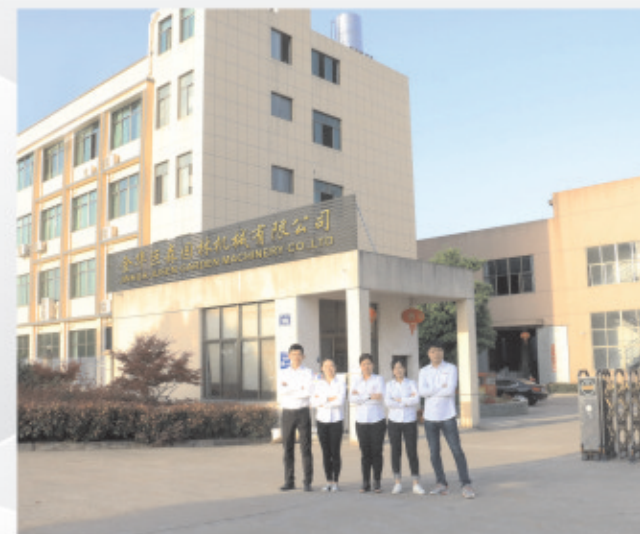
Motto Only what you can not think, nothing we can not do it.

价值观：老实做人，踏实做事

Values Treat people honestly, complete your work seriously.



我们的团队 Our teams



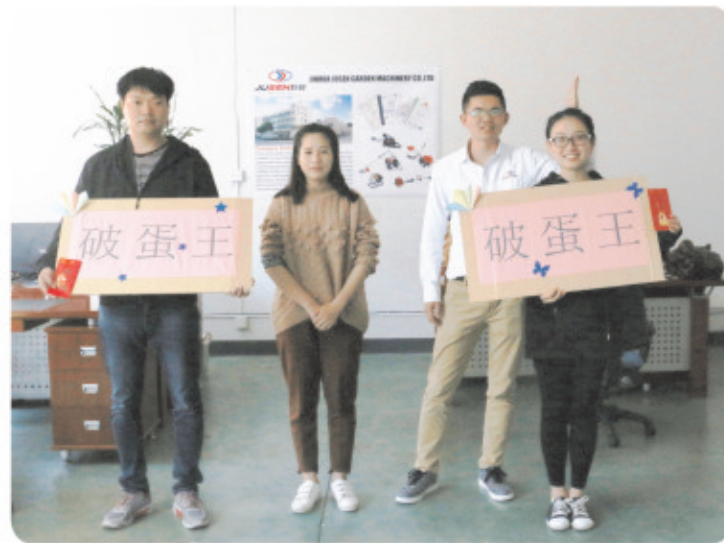
公司团建活动

Company team building activities



公司团建活动

Company team building activities



发展历程

Development process

2008

公司成立 外贸公司 巨森进出口

The company established a foreign trade company, Jusen Import and Export company

2012

建立生产线，检测设备，设计部

Establish production line, testing equipment, design department

2015

南美，欧洲，东南亚多个国家建立合作关系

Establishing cooperative relationships with South America, Europe, and Southeast Asia

2017

获得阿里巴巴金牌供应商

Received the honor of Alibaba Gold Supplier

2019

目标市场 - 非洲

Target market --- Africa

我们的产品
Our products

地 钻

水 泵

油 锯

松 土 机

割 草 机

Chain saw, Brush cutter, Earth auger, Water pump engine.



我们的产品

Our products



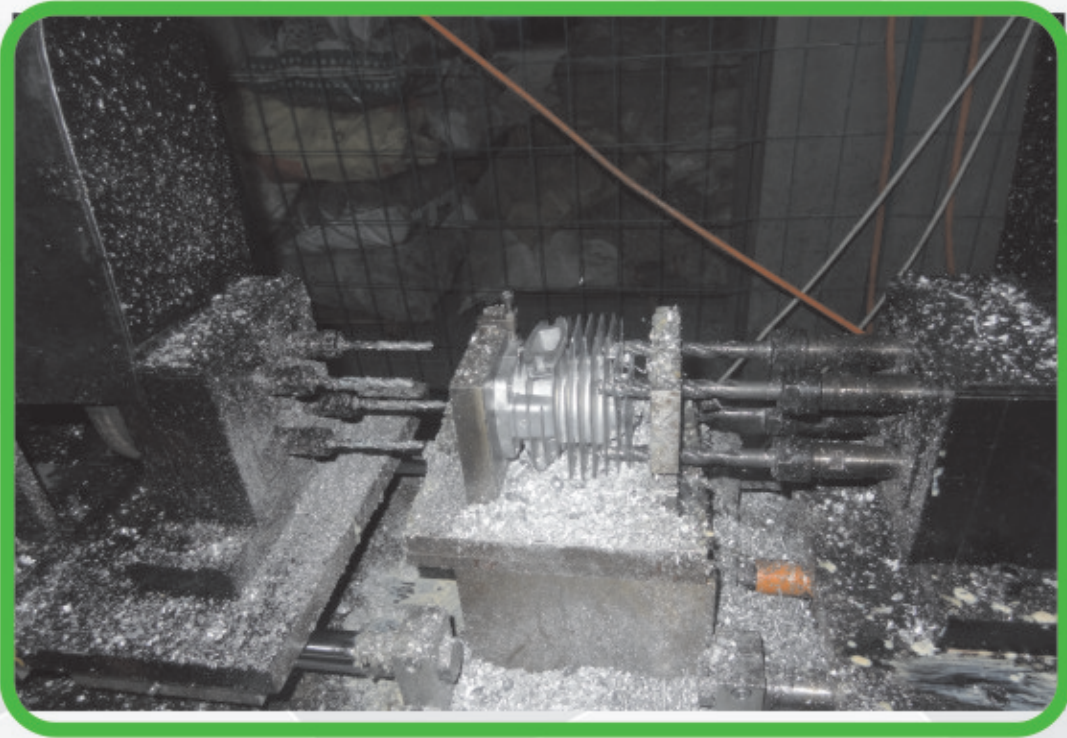
JUSEN 巨森

www.cnjusen.com



铝配件CNC加工中心制造

Aluminum parts CNC machining center manufacturing



生产车间

Production workshop



生产车间

Production workshop



产品测试

Product testing



产品测试 Product testing

割草机耐久测试

Lawn mower endurance test



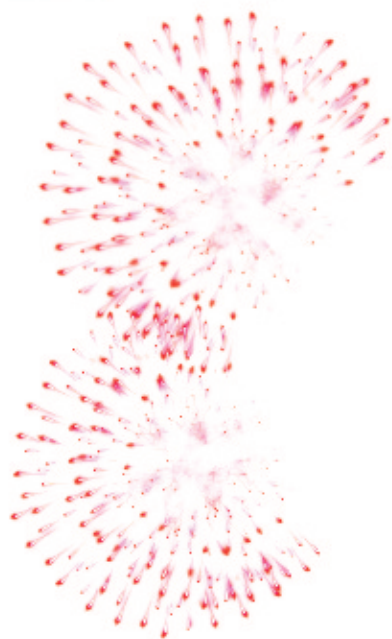
产品实际操作

Product operation



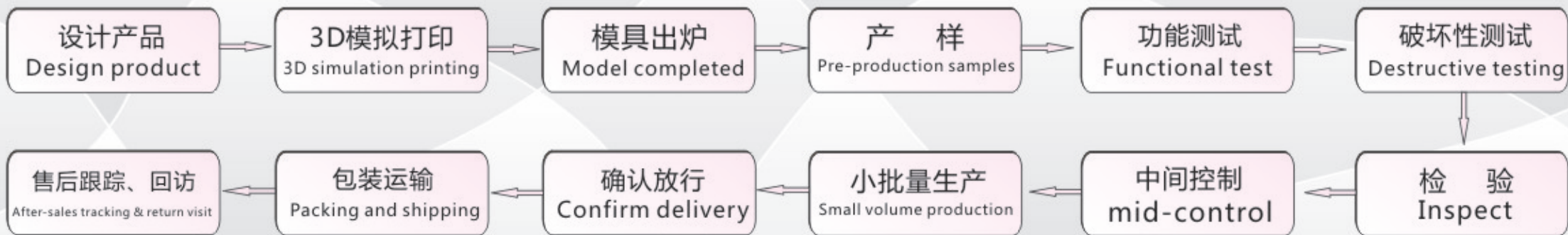
客户测试

Customer testing

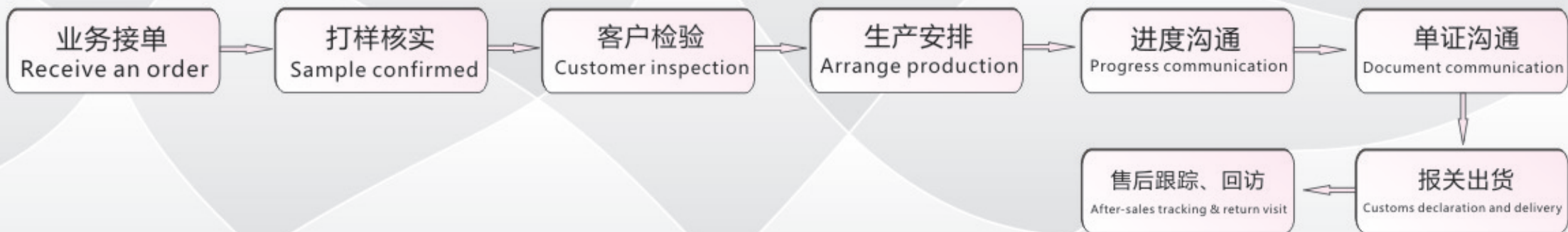


服务流程

Service process



客户接单服务流程



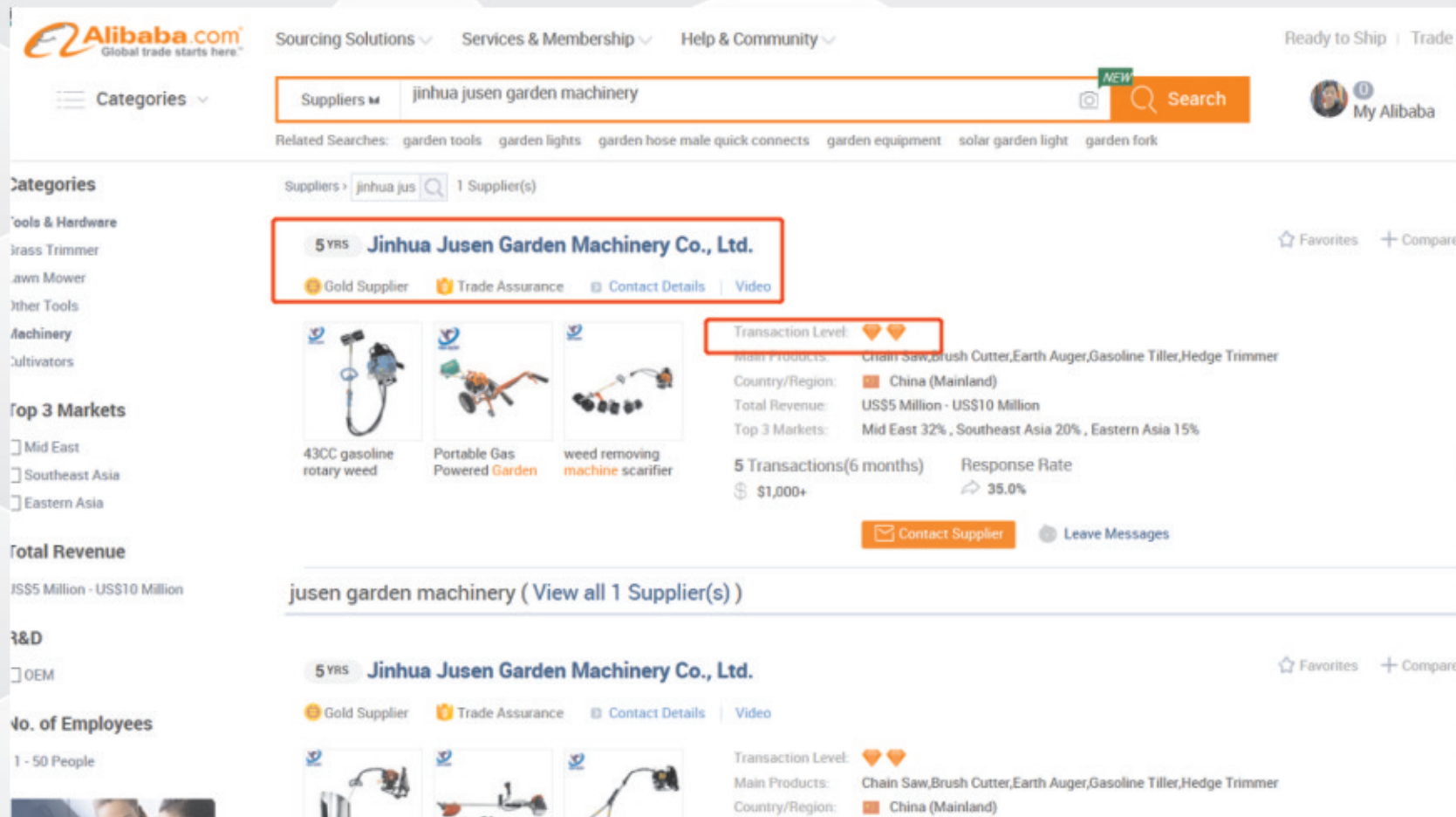
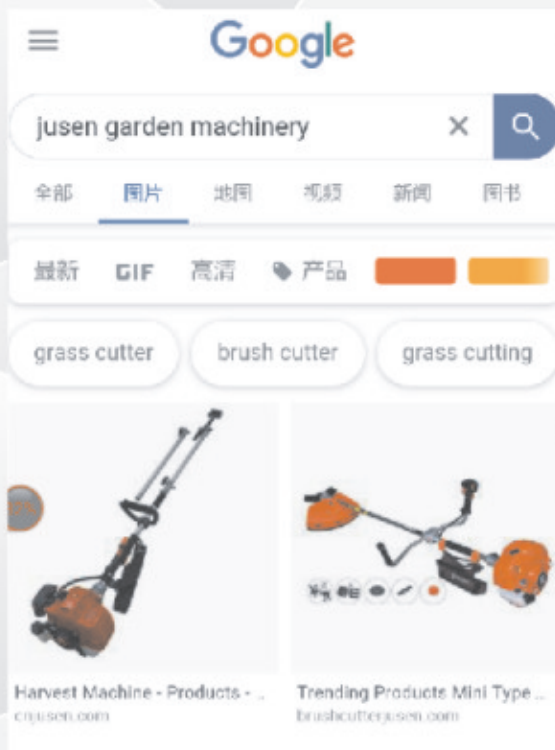
接单渠道

Channels for orders

1. 阿里巴巴
Alibaba

2. google
Google

3. 线下展会
Offline exhibition





谢谢观赏 Thank you !

地址：浙江省金华市婺城区金西经济开发区块1幢3楼
Address: NO.1569 Linhu Road, Jinxi Development
area, JinHua City, Zhejiang Province, China
电话Tel : 0579-83266686
传真Fax : 0579-82666936
联系人：苏东梅 15158903310
Contact person: May Su Mobile: 15158903310
E-mail : sales@maytool.net
sales1@cnjusen.com



容他人难容 为他人难为

利他 高效 改变 卓越



大姚九剑

云素八物 - 473-苏东梅

云素八物 八斗之才 德容万物